

# **Roxio**

# **Easy CD & DVD Burning**

## **Getting Started Guide**

© Corel Corporation or its subsidiaries. All rights reserved.

# Getting started with Easy CD & DVD Burning

---

## **In this guide**

Welcome to Roxio Easy CD & DVD Burning	<b>3</b>
About this guide	<b>3</b>
About the Easy CD & DVD Burning suite	<b>4</b>
About project assistants	<b>6</b>
Installing Easy CD & DVD Burning	<b>7</b>
Getting to know Roxio Central	<b>8</b>
Starting media projects from Roxio Central	<b>12</b>
Launching applications from Roxio Central	<b>13</b>
Where to find more information	<b>15</b>
Easy CD & DVD Burning support options	<b>16</b>

## Welcome to Roxio Easy CD & DVD Burning

Welcome to Roxio Easy CD & DVD Burning. Designed for beginners and experts alike, Easy CD & DVD Burning makes it easy to create data, audio, and backup discs. Using Easy CD & DVD Burning you can:

- Archive large projects to multiple discs.
- Create audio and data discs, and copy discs.
- Create advanced format and bootable discs, and more.
- Encrypt the files on the disc so that the files can only be accessed by someone entering a password that you select.
- Use SureThing Express Labeler to make personalized disc labels and jewel case covers.

### About this guide

This guide provides an overview of Easy CD & DVD Burning to help you get started. For detailed information about how to use all of the features of Easy CD & DVD Burning, see the online Help described in *Where to find more information* on page 15.

Some of the components available in Easy CD & DVD Burning may not be described in this guide. Each component includes detailed online Help, which you can find under the component Help menu or by pressing F1.

Depending on the version of Easy CD & DVD Burning you are using, some of the components described in this guide may not be available.

## About the Easy CD & DVD Burning suite

The following sections give a brief description of the components included in Easy CD & DVD Burning.

- **Roxio Central** Roxio Central is the starting point that lets you access the components and tools you need for all of your digital media projects. Using Roxio Central, you can:
  - Open all of your Easy CD & DVD Burning applications and utilities.
  - Quickly create a CD or DVD disc.
  - Use the Mini Mode to play audio, create audio and data discs, and copy discs.
  - Use the project tabs to get started with all of your digital media projects. Each tab includes a handy guide, and gives you quick access to the tools you need for each type of project.

For more information, see *Getting to know Roxio Central* on page 8.

- **Creator Classic®** Use Creator Classic to create data CDs and DVDs, and to archive large projects to multiple discs. Create advanced format and bootable discs, and more. In addition, you can choose to encrypt the files on the disc so that the files can only be accessed by someone entering a password that you select.
- **Music Disc Creator** Use Music Disc Creator to create music compilations to play on your home or car stereo, portable music player, DVD player, or on your computer. Using audio files from your music CDs, hard drive, or DVD-Video sources, you can create audio CDs and MP3/WMA discs.

- **PhotoSuite®** Use PhotoSuite to enhance, edit, and share your digital photos.

Use AutoFix™ to automatically adjust the exposure, saturation, and sharpness of photos. Use other editing features in PhotoSuite to fix common problems such as red eye.

The Photo Projects assistant guides you as you create personalized calendars, greeting cards, and collages using your own photos. You can also create photo slideshows to share with others.

- **Sound Editor™** Use Sound Editor to record and edit sound clips and audio files, and to create your own audio mixes. Use Easy CD & DVD Burning's new LP & Tape Assistant to capture audio from an analog source (such as an LP or audio cassette) to create a digital audio file.

## About project assistants

Easy CD & DVD Burning includes several project assistants which provide a step-by-step guide to help you create professional-looking digital media projects.

- **Easy Audio Capture** Easy Audio Capture lets you quickly capture (record) audio from analog sources (such as LP records, tapes, or Internet radio), using a connection from your audio equipment to your computer's sound input.
- **Express Labeler** Create disc labels and disc inserts such as front or back covers or booklets.
- **LP & Tape Assistant** Create digital audio files from your old LPs and tapes in just a few simple steps. You can then edit and enhance your audio files, and even use them in your Easy CD & DVD Burning projects.
- **Media Import** Use Media Import to import all types of media files to your computer—from digital photos to video files, audio files, and DVD movie titles—all in one place.
- **MyDVD Express™** Use MyDVD Express to create multimedia stories on DVD to share with family and friends. Mix photos and video, include your favorite sound track, choose from a selection of professional-looking menus, and burn to disc.
- **Slideshow Assistant** Create a high-resolution photo slideshow in just a few clicks, including background audio and Pan and Zoom effects.

Once you've completed your projects using a project assistant, you're ready to print, burn, or e-mail the project to friends. You can also continue working with your project using the advanced features of the full Easy CD & DVD Burning components such as PhotoSuite, Label Creator, or Music Disc Creator.

## Installing Easy CD & DVD Burning

Follow this procedure to install Easy CD & DVD Burning.

### To install Easy CD & DVD Burning:

- 1 Insert the Easy CD & DVD Burning installation disc into your disc drive.  
  
If Autorun is enabled on your computer, the Easy CD & DVD Burning installation window appears automatically and you can skip step 2 and step 3.
- 2 Choose **Start > Run**.
- 3 Type **d:\setup** (substitute the appropriate letter of your disc drive for **d**).
- 4 Follow the installation instructions that appear on the screen.

## Getting to know Roxio Central

The easiest way to start your digital media project is from Roxio Central. Roxio Central is the starting point that lets you access the components and tools you need for all of your digital media projects.

Using Roxio Central, you can:

- Open all of your Easy CD & DVD Burning applications and utilities.
- Quickly create, copy, format, or erase a disc.
- Use the Mini Mode to play audio, create audio and data discs, and copy discs.
- Use the project tabs to get started with all of your digital media projects.

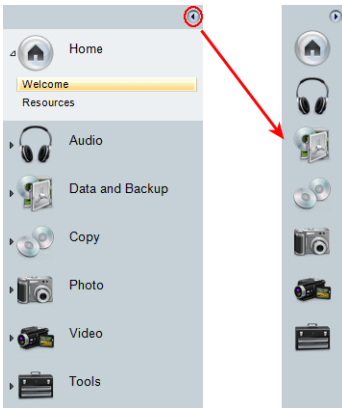


This section gives a brief introduction to using Roxio Central, the project launcher, and Mini Mode. For more detailed information, see the *Roxio Central Help Center*.



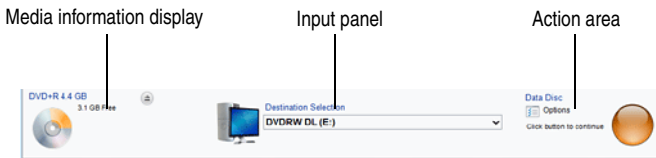
## Adjusting the size of the Project pane

To enlarge the project window and minimize the project tabs, click the arrow button at the top of the project list. The project tabs will be replaced by a series of icons, and the project window will enlarge. To select a project, hold your mouse over one of the project icons. The list of available projects will appear. Click the name of a project to get started.



## Using the control panel

The control panel appears across the bottom of the application window. It consists of three main areas: the media information display on the left, the input panel in the center, and the action area on the right.



**Media information display:** This display includes a visual representation of the disc or hard drive that is the destination for your project. The information presented varies from project to project and is updated when you change discs or destination drives.

Some of the information you will see in the media information display includes:

- The format and capacity of the disc currently inserted in your recorder drive
- The volume label or title of the disc
- The free space remaining on the disc
- The number of the discs needed to complete the current project

For best results, insert a blank or appendable disc into your recorder drive before starting your project. If no disc is detected or if the disc in the drive is incompatible with the project (a DVD disc for a CD-only project, for instance), the estimates shown will be based on the type of disc most commonly used for your project.

**Input area:** The input area in the center of the control panel changes from project to project and in some cases, from step to step within a single project.

The input area is used to display:

- A drop-down menu you can use to select the recorder drive for the active project. In some projects, this same drop-down menu can be used to browse to a specific file or location on your hard drive.
- The progress of the active project.
- Audio and video playback controls.

**Action area:** On the right side of the control panel is the action area where you will set many projects in motion by clicking an action button. The action button only appears when a project has been selected.

The action area also includes the Options button, which opens a group of panels you can use to set project options.

**Tip:** To cancel a project after you have clicked on the action button, click on the action button again.

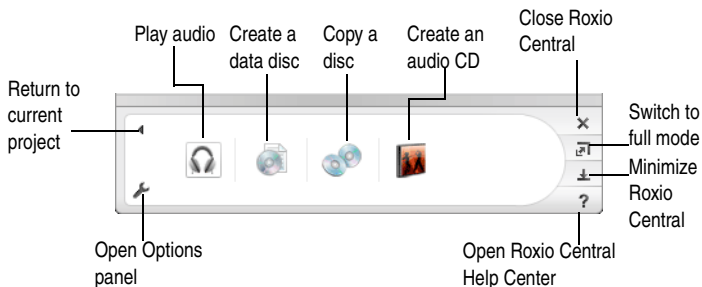
## Working in Mini Mode

Two versions of the project launcher interface are available: the full-size application window and Mini Mode.

Mini Mode offers a subset of the features available in the full-size interface. This section describes some of its basic features. To learn more about using Mini Mode, consult the Help section for the type of project you want to complete.

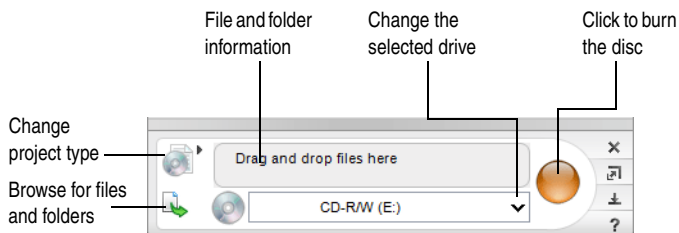
### To create projects in Mini Mode:

- 1 Choose **View > Mini Mode**.
- 2 Use the following buttons to navigate through Mini Mode and start projects:



- 3 Clicking one of the project buttons opens a miniature project window tailored to that project.

The following example shows the data disc project. Other project windows are different, but the basic navigation is the same. Use the following buttons to create your project using Mini Mode:



## Starting media projects from Roxio Central

You can quickly start media projects from Roxio Central using the project panel. Each project window provides a list of tasks, as well as a guide screen to help you decide which project type best suits your needs.

---



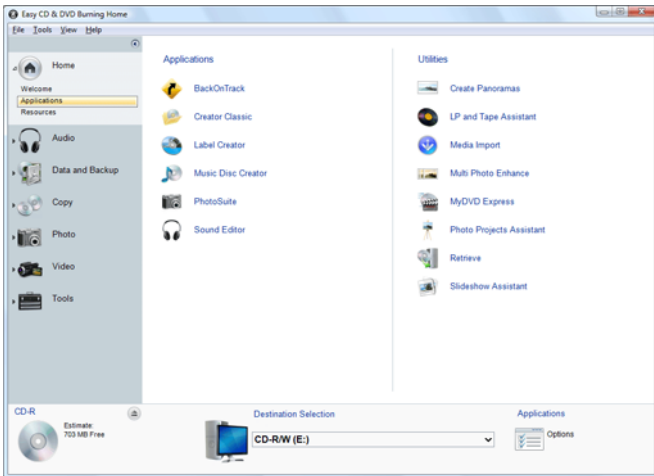
**Note** Depending on the software version you are running, some or all of the project tabs may be available.

---

- **Audio:** The Audio window gives you quick access to audio projects such as copying audio discs and converting files to MP3, WMA, and other popular formats.
- **Data and Backup:** This window helps you protect your important files.
- **Copy:** The Copy window gives you quick access to copying tasks such as copying non-protected discs and creating and burning disc images.
- **Photo:** The Photo window provides the tools you need to import photos, create high-resolution slideshows, and create photo projects using PhotoSuite.
- **Video:** The Video window gives you quick access to the tools you need to create DVD movies using MyDVD Express.
- **Tools:** The Tools window lets you quickly erase or finalize a disc, and get disc information. You can also create disc labels, including laser labels using a LightScribe® or LabelFlash® device.

## Launching applications from Roxio Central

For quick access to Easy CD & DVD Burning components and utilities from Roxio Central, click Applications under Home.



**Note** The applications available from Roxio Central may be different from this example, depending on the software version you are running.

---

## Applications

You can open the following applications from Roxio Central. Each application is briefly described in *About the Easy CD & DVD Burning suite* on page 4. For more information, see the component Help Center.

- Easy Audio Capture
- LP & Tape Assistant
- Media Import
- MyDVD Express
- SlideShow Assistant

## Where to find more information

This guide provides an overview of Easy CD & DVD Burning to help you get started. For detailed information about how to use all of the features of Easy CD & DVD Burning, see the online Help described below.

### Online Help

Each Easy CD & DVD Burning component has an extensive, searchable Help Center. Each Help Center includes step-by-step procedures and answers to frequently asked questions.

To access the Help Center, choose **Help > Component Help Center**. To view context-sensitive Help for the activity you are currently doing, press **F1**.

### Tutorials

Easy CD & DVD Burning includes a set of tutorials to help you quickly become familiar with all of the features available from Roxio Central. Each tutorial includes tips and step-by-step instructions to help you get started creating exciting digital media projects.

#### Choose any of the following ways to view a tutorial:

- From Roxio Central, choose **Help > Tutorial**, and then select the tutorial you want to view.
- Visit the Roxio support Web site, located at <http://support.roxio.com>, for helpful “how-to” tutorials and other product information.

### Roxio online support

If you can't find the answers you are looking for in the online Help or this guide, you can get the most current information from our Web site.

#### You can access the Roxio Web site in any of these ways:

- Click the Roxio logo from any Easy CD & DVD Burning component window.
- Launch your Web browser and go to <http://support.roxio.com>.

## Easy CD & DVD Burning support options

### Unlimited self help options

Roxio provides a variety of self help tools, including our virtual agent, a searchable knowledge base of support articles with troubleshooting tips, and tutorials that can help you get the most out of your Roxio products.

Be sure to visit the Roxio Support Web site before you contact us by phone or e-mail—you'll find answers to most of your questions at <http://support.roxio.com>.

### Alternate support options

Alternate support options such as e-mail or telephone support may be available on a limited or paid basis for your Roxio product. Please visit our Web site at <http://support.roxio.com> to find out what options are available for your product.

### Before you contact Roxio

If you can't find the help you're looking for in the online Help or on Roxio's support Web site, you may decide to contact us by e-mail or phone. Before you do, visit <http://support.roxio.com> to view helpful steps that you can take before you contact us.

### Contacting Roxio

Log in to our Customer Web portal to submit a request for assistance or to find support contact information for your location. You can find the customer Web portal at <http://selfserve.roxio.com>.