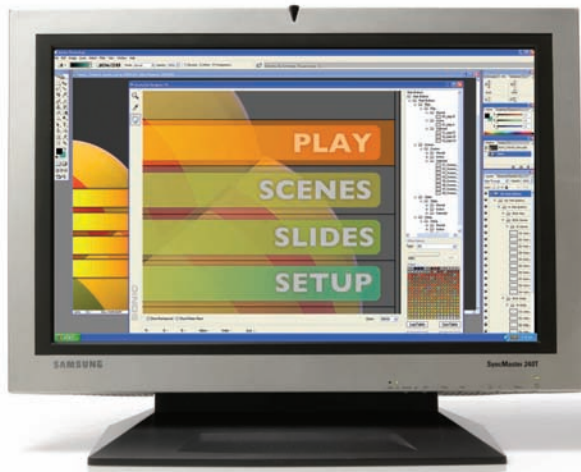


SCENARIST®

DESIGNER



Scenarist® Designer PS generates stunning optimized graphics and automated layout information for professional Blu-ray Disc production facilities. Putting designers in control of the interactive layout, Scenarist Designer PS enables designers to design once for multiple standards, eliminating layout errors, and delivering a fast and efficient Blu-ray Disc production workflow.

ADVANCED INTERACTIVE DESIGN FOR BLU-RAY DISC

Scenarist Designer PS is a Photoshop® Plug-in that automatically generates optimized graphics for Blu-ray Disc. Putting designers in control of the interactive layout, Scenarist Designer PS enables designers to design once for HDMV and BD-J, eliminating layout errors when designs are passed to authors.

Designed to seamlessly integrate with both Adobe® Photoshop and the Scenarist Workgroup, Scenarist Designer PS enables the fastest and most efficient design-to-author workflow possible for Blu-ray Disc. Featuring exclusive optimization algorithms and support for both Windows® and Mac OS® X, Scenarist Designer PS is a must-have component of every professional Blu-ray Disc designer's tool kit.

Automated Graphics Optimization for the Next-Generation Formats

Automatically create optimized graphics for your chosen format without having to understand the specific requirements of each format specification.

Design Once for all HD formats

Scenarist Designer PS generates optimized graphics for all commonly used BD standards (HDMV and BD-J) ensuring designers are ready to deliver for every possible format and only need to design once.

Layout Control Where it Belongs, in the hands of the Designer

Scenarist Designer PS puts the designer in control of the final layout of the interactive elements of the title. All positioning information and graphics slicing is handled within Scenarist Designer PS and imports directly into the Scenarist Authoring Workgroup, leaving zero room for layout errors.

BD-J Support

Scenarist Designer PS exports Image Mosaic files and a simplified XML format to make BD-J programming easier and more efficient.

Built-in Buffer Checking

Ensure that your design will multiplex and playback correctly by using Designer's built-in Buffer Checker to analyze the memory requirements of your design.

Seamless Adobe Photoshop Integration

Scenarist Designer PS enables designers to optimize their HD graphics without leaving Photoshop. With no extra programs to use you simply output optimized graphics directly from Photoshop.

Seamless Integration with the Scenarist Workgroup

Scenarist Designer PS generates special metadata files for the Scenarist Workgroup making the design-to-author workflow fast, seamless, and free from errors. Designs can also be changed and updated at the click of a button, a massive time saver.

Exclusive Optimization Algorithms

Exclusive color reduction algorithms ensure that designers deliver files of the highest quality at the same time as keeping file sizes as small as possible.

Windows and Mac OS X Support

Scenarist Designer PS supports both Windows and Mac OS X, easily integrating into all existing design and authoring workflows. Scenarist Designer PS is also the only BD-ROM design tool available for Mac OS X.

Hollywood Pedigree

Designed in collaboration with leading industry professionals and members of the Sonic High Definition Authoring Alliance, Scenarist Designer PS has been designed with the industry, for the industry.

From Sonic, First in HD

From the leading supplier of design, encoding, and authoring systems for professional Blu-ray Disc production.



LEARN MORE, BOOK A DEMONSTRATION, AND FIND YOUR NEAREST RESELLER:

WWW.SONIC.COM/GO/SCENARIST

SYSTEM REQUIREMENTS

Windows

- Windows® XP Professional (Service Pack 2)
- Adobe® Photoshop® CS2 or CS3
- Intel® Pentium® 4 processor (or equivalent)
- 1 GB of RAM
- CD or DVD-ROM drive
- Monitor with 1024 x 768 screen resolution and 24-bit color
- 100 MB of hard drive space on system drive for Sonic applications and related files
- 1 available USB port (for security dongle)

Mac

- Mac OS® X 10.4 or greater
- Adobe Photoshop CS2 or CS3
- PowerPC® or Intel processor (Mac)
- 1 GB of RAM
- CD or DVD-ROM drive
- Monitor with 1024 x 768 screen resolution and 24-bit color
- 100 MB of hard drive space on system drive for Sonic applications and related files
- 1 available USB port (for security dongle)

SPECIFICATIONS

Supported Operating Systems

- Windows XP Professional (SP2)
- Mac OS 10.4 or greater

Adobe Photoshop Support

- Adobe Photoshop CS2
- Adobe Photoshop CS3

Workflow Efficiency Tools

- Load and Save palettes
- Global palette support – optimize multiple pages using a single color palette
- Auto-update of IG and PG files (BD-ROM only) - redesign and reauthor with a single button click
- Support for common background layers
- Simple asset export - export a single graphic rather than an entire document
- Photoshop Helper Scripts which automate the process of creating Designer-formatted PSDs
- Buffer Checker - ensure your design will run successfully before you export

Export Optimization Tools

- Best-in-class color reduction algorithm
- Choice of dithering algorithms
- Dithering slider control
- Zoom tool for dithering analysis
- Color picker
- Automatic image slicing

Output Options - HDMV

- Optimized 8-bit PNG Interactive Graphics
- Optimized 8-bit PNG Presentation Graphics
- Optimized HDMV IG and PG palette
- HDMV metadata for importing into Scenarist –contains positioning and location information

Output Options - BD-J

- Optimized 8-bit PNG Graphics
- Full Color 32-bit PNG Graphics
- Image Mosaics, Layers or Slices
- XML metadata for BD-J Programmers – contains positioning and location information

CONTACT INFO

SONIC USA

101 Rowland Way. Novato. CA 94945. USA.
Ph: 415.893.8000. FAX: 415.893.7834

SONIC BURBANK

3500 West Olive Avenue. Suite 730. Burbank. CA 91505. USA.
Ph: 818.823.4000

SONIC EUROPE

22 Warwick Street. London. W1B 5NF. England.
Ph: +44 20 7437 1100.

SONIC PAC RIM

5F 2-6-30 Kaigan. Minato-Ku, Tokyo 105. Japan.
Ph: +81 3 5439 7171.

