



## Restoring Treasured Photographs With Roxio PhotoSuite 10

### Roxio Easy Media Creator

### Introduction:

In this tutorial, you'll learn how to restore old photos in Roxio PhotoSuite, which is a component of Easy Media Creator 10. As you'll see, PhotoSuite provides a comprehensive suite of easy to use tools for quickly fixing and enhancing your photos with effects, borders and templates.

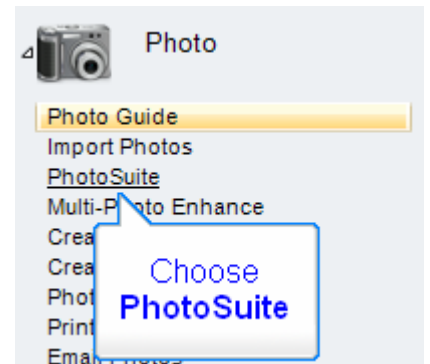
I'll be restoring this treasured family photo that spent over sixty years in a shoebox before I found it and scanned it into my computer. It's a great shot, but has a number of scratches and ragged edges, and is faded and discolored. I'll remove the scratches first, then brighten and sharpen the image.

After that, I'll straighten the image, which I scanned in at a slight angle, crop the edges and add a mat for a frame.

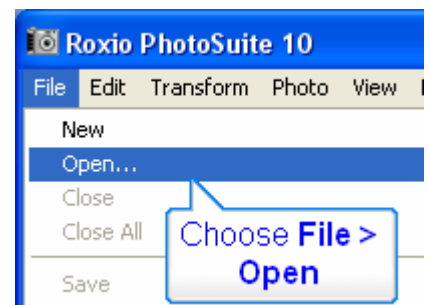


1. Start in Easy Media Creator Suite 10, then click **Photo**, then **PhotoSuite**.

This opens Roxio's PhotoSuite 10.



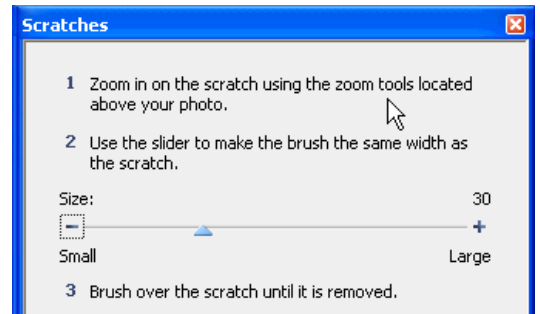
2. Choose **File > Open** to open the target image.



3. In the tool panel on the left, Click **Fix** to open those tools, then click **Scratches**.

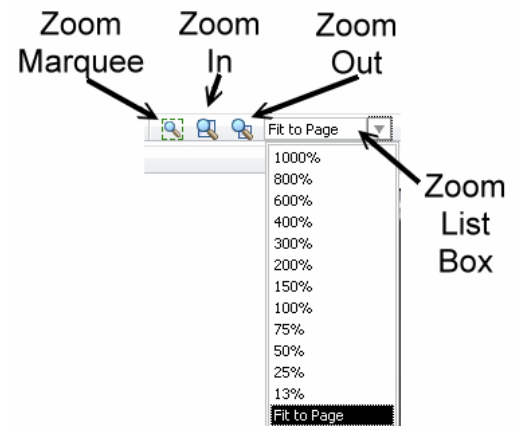


4. Scratch removal is a three-step process, as shown in the Figure.

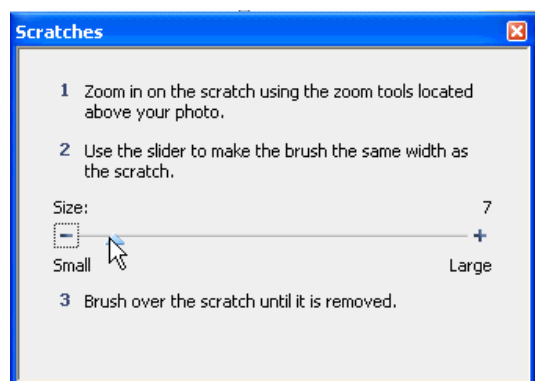


5. First, you'll want to zoom into the image so you can see and work with the scratch most effectively. PhotoSuite offers multiple zoom options.

- Choose the **Zoom Marquee** icon, and drag a box around the scratch. PhotoSuite zooms into the targeted area.
- Choose **Zoom In** to zoom into the image, and then use scroll bars on the right side and bottom to navigate around the image.
- Choose **Zoom Out** to zoom out of the image.
- Choose a value in the **Zoom List Box** to set the zoom percentage, or choose Fit To Page to display the entire photo onscreen.



6. Next, adjust brush size by **dragging** the slider to the desired size.

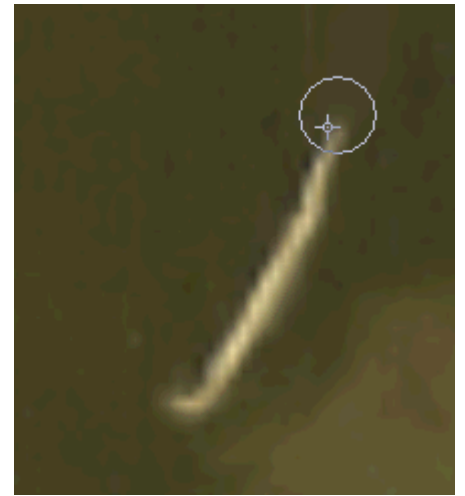


7. Then, **click** the brush over the scratch until the scratch is gone.

During operation, PhotoSuite covers the scratch with pixels that match the surrounding area, so when you're done, the scratch blends in completely. Sometimes it helps to enlarge the brush to eliminate the scratch entirely.

Then, repeat the process with other scratches. When finished, click the Zoom List Box and choose Fit to Page to display the full image on screen.

Now let's adjust exposure, saturation and sharpness.



8. In the tool panel on the left, click **Fix** to open those tools, then click **AutoFix**.

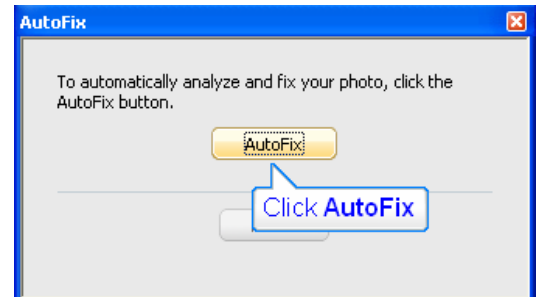
PhotoSuite opens the AutoFix dialog.



9. In the AutoFix dialog, click **AutoFix**.

PhotoSuite adjusts exposure, saturation and sharpness as necessary. If you're happy with the result, close the dialog by clicking the X in the upper right corner.

If not, click **Reset**, and then adjust your photo using the Exposure, Saturation and Sharpness tools in the Fix category.



Here's where we are so far, scratches removed and contrast, exposure and sharpness adjusted. Pretty good results for about five minutes of work, wouldn't you say?

Now let's straighten and crop the image.



10. In the tool panel on the left, click **Fix** to open those tools, and then click **Straighten**.



11. Following the instructions, draw a line along an object in the photo by **clicking** the top edge and then **clicking** the bottom edge.

Then click the **Straighten** button. PhotoSuite straightens the image.

Click the **Switch to Crop** button to crop the rough edges.



12. PhotoSuite displays the Crop dialog, and places Crop Handles around the image.

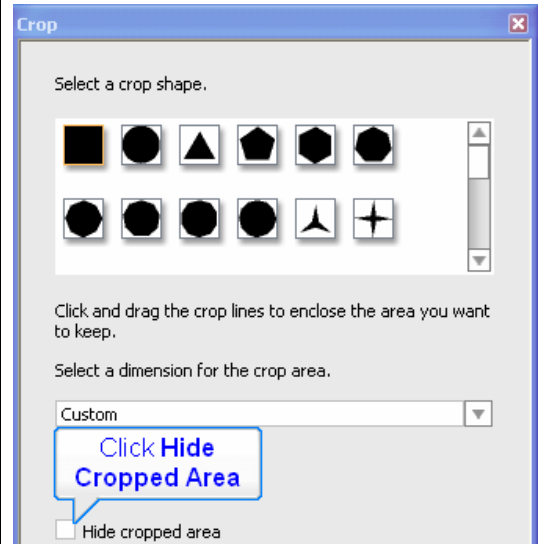
Adjust the **Crop Handles** by dragging them to the desired position.



13. Click **Hide Cropped Area** for better preview.

14. After finalizing crop handle positioning, close the dialog by clicking the X in the upper right. PhotoSuite applies the crop.

Now let's convert the image from sepia to black and white, and add a mat.



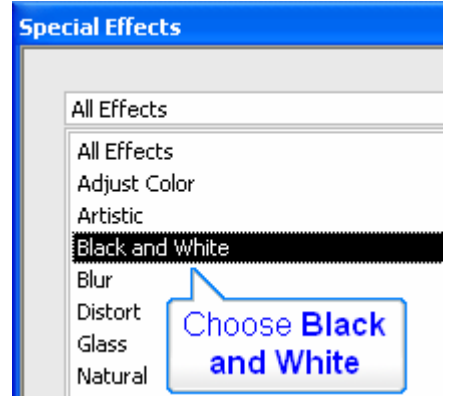
15. In the tool panel on the left, choose **Enhance** to open those tools, and then choose **Special Effects**.

PhotoSuite opens the Special Effects panel.



16. In the Special Effects list box, choose **Black and White**.

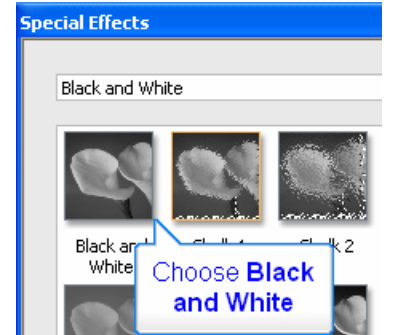
PhotoSuite loads the Black and White special effects in the browser panel.



17. In the browser panel, choose **Black and White**.

PhotoSuite converts the image to black and white.

Now let's add the mat.

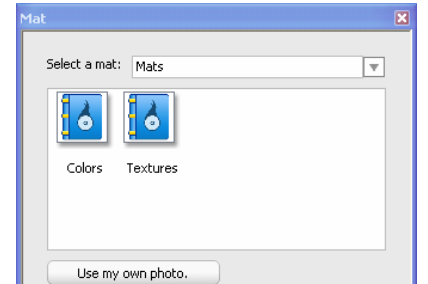


18. In the tool panel on the left, choose **Enhance** to open those tools, and then choose **Mat**.

PhotoSuite opens the Mat panel.



19. In the Mat panel, click **Colors**, **Textures** or the **Use my own photo** button to identify the source of the mat. For this tutorial, I'm going to use Colors.



20. Choose the **desired color**, and adjust other settings as necessary.

Specifically, you may have to adjust the width of the mat, and perhaps the V-groove offset to best fit the image. When you're done, click the X on the upper right to close the dialog.

That's it! I've included before and after shots below. The scratches look like they had never been there, the faces are much more distinctive and the photo itself vastly more impressive. Now you can print the photo, or use it another Easy Media Creator 10 project, like an invitation or greeting card.

