



# Creating a Panorama

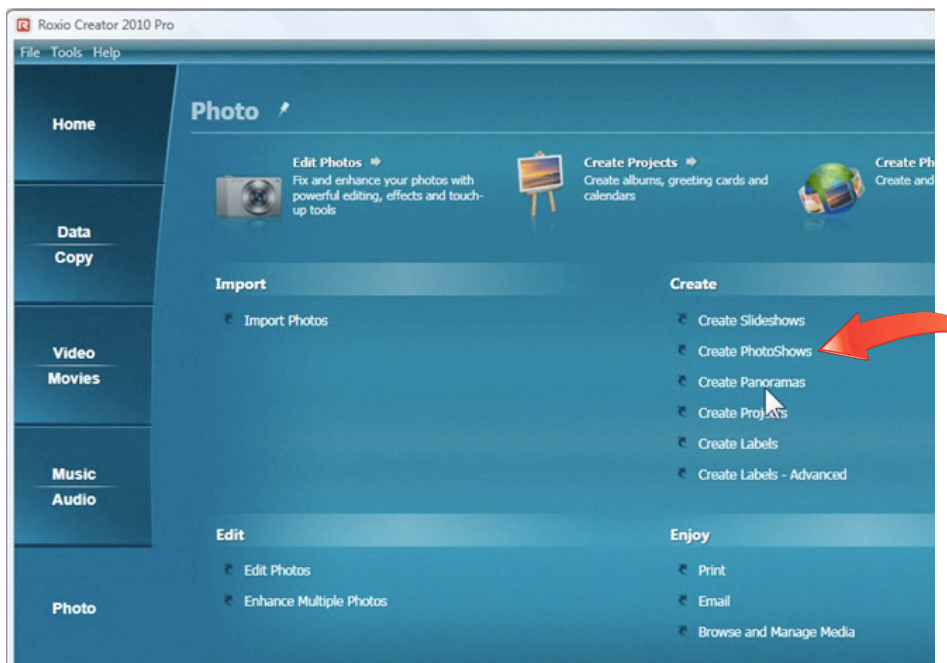
The **Roxio Panorama Assistant** is part of the Roxio Creator suite. By using the Panorama Assistant, you can turn routine snapshots into sweeping vistas.

These super-wide images are created by stitching together two or more pictures side-by-side, and are perfect for depicting landscapes, crowd scenes and architectural photos.

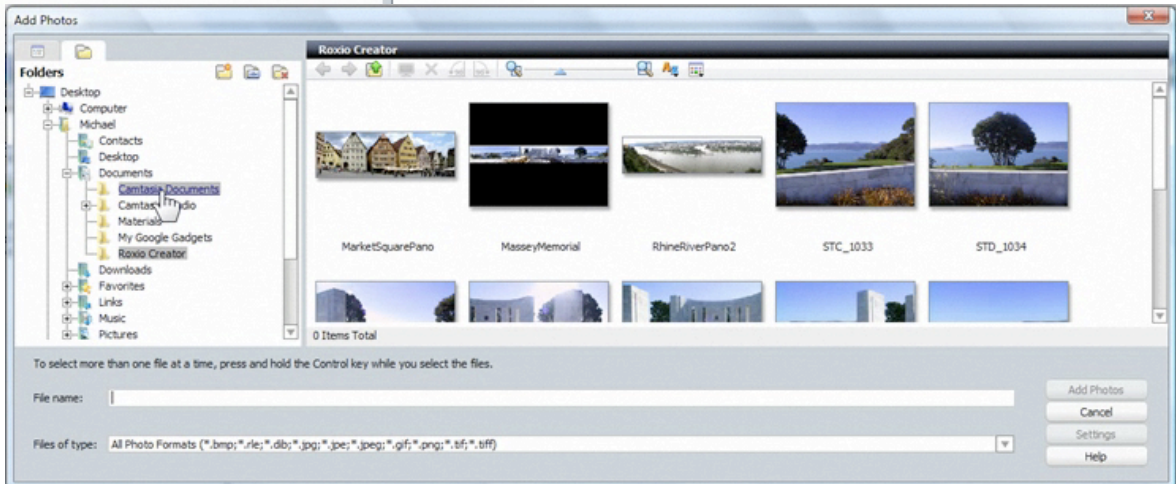
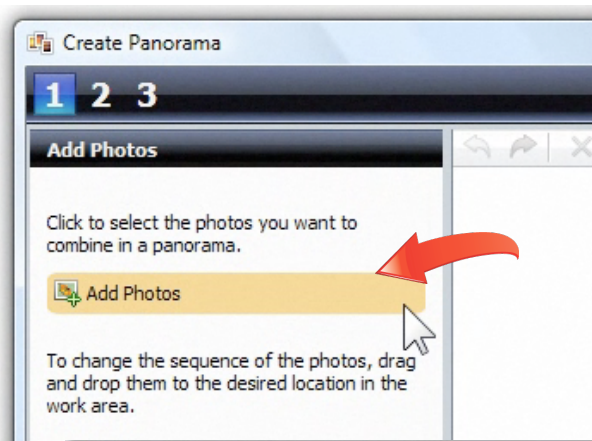
All you need to begin is a set of overlapping photos taken by turning your camera as you stand in one spot.

## Getting Started:

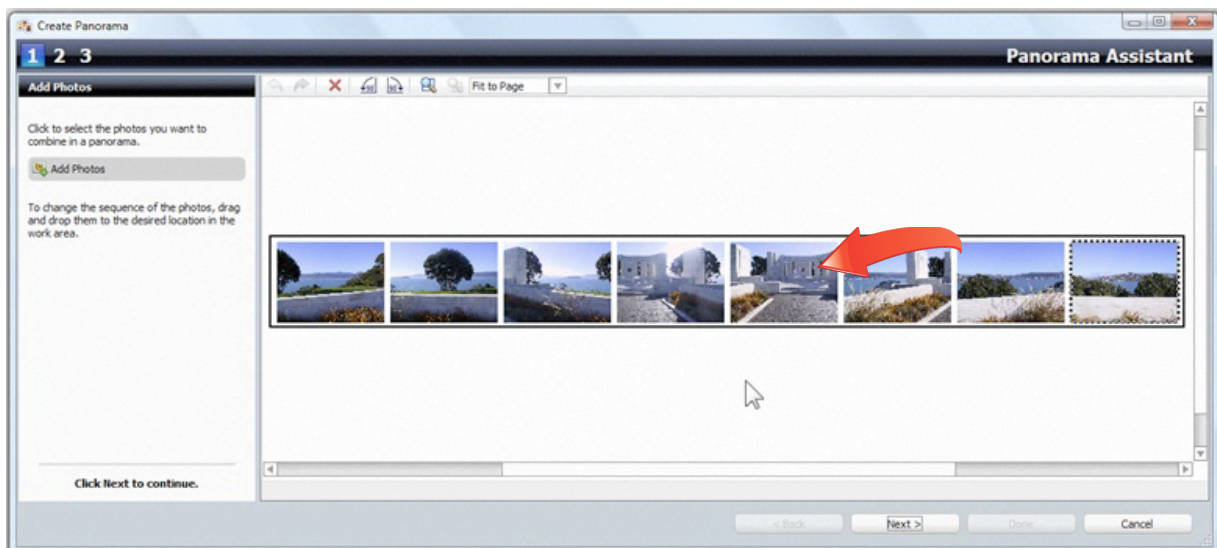
1. **Open the Panorama Assistant.** Click on the Photo Tab and choose "Create Panoramas."



2. **Add your photos.** The first step is to bring in the photos that you want to stitch together. Click the Add Photos button and choose your photos from the browser. You can add all the photos for your panorama at once by holding down the control key as you select them. There are 8 pictures in our sequence of the Massey Memorial in Wellington, New Zealand, but all you need is two or more.



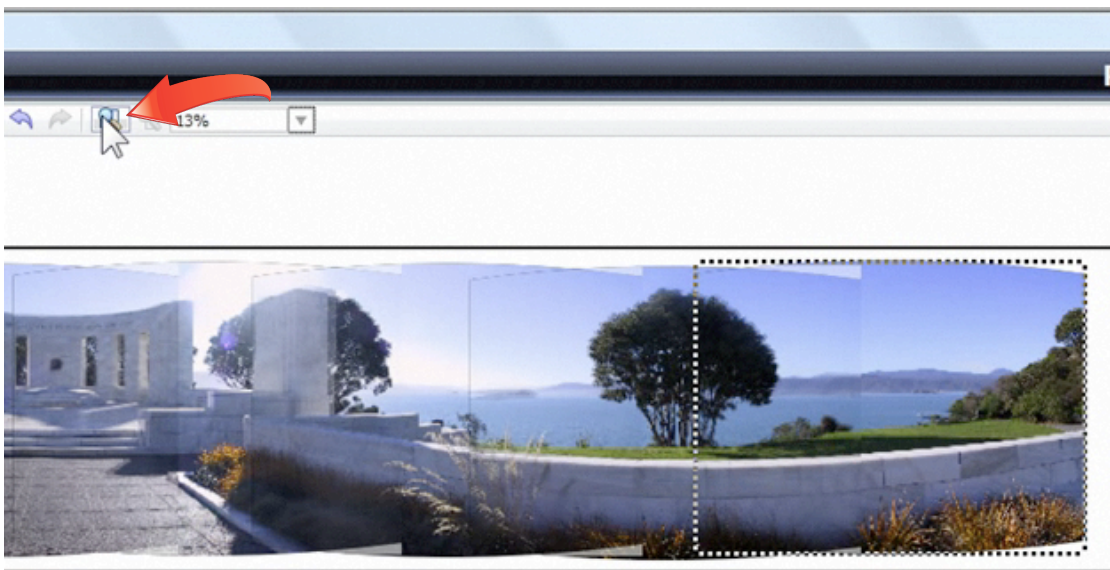
**3. Arrange your photos.** Check to see that your photos are in the correct sequence from right to left. If needed, drag them into order.



**4. Align your photos.** Now that the photos are in order, click Next and the Panorama Assistant will work its magic, automatically aligning your photos horizontally and vertically, so that they begin to merge together.



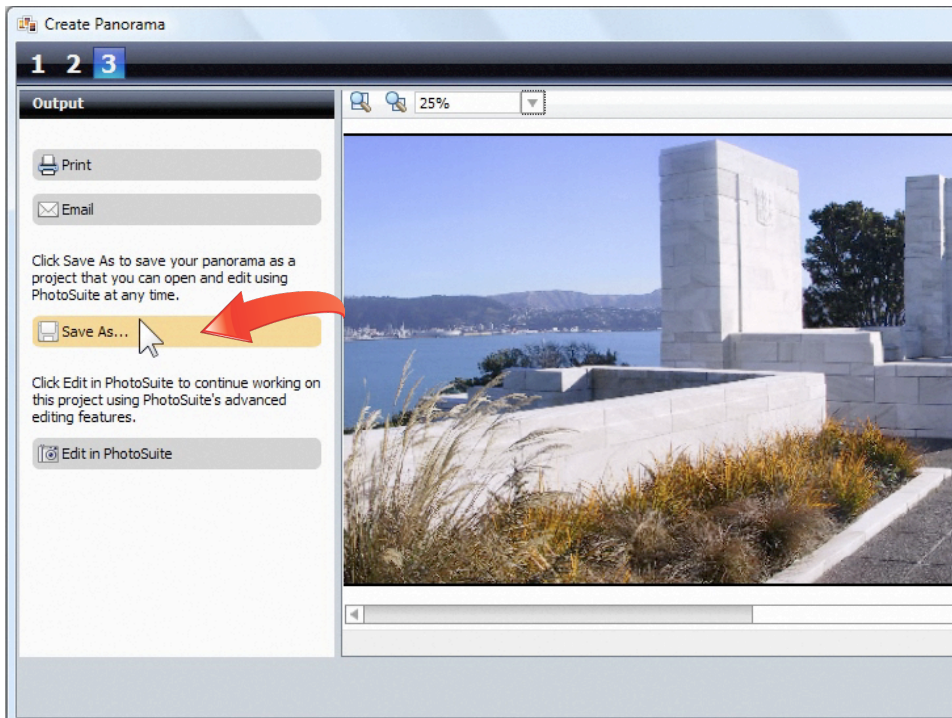
- 5. Fine-tune the alignment.** If anything looks out of place, you can click the zoom button at the top of the window, and then fine-tune the alignment by dragging the photos as needed. Don't worry if it doesn't look perfect at this point, the edges will be blended in the next step.



- 6. Finish the panorama.** Once your alignment is done, click Next to finish the panorama. The Assistant will now blend all the edges of your photos together into one seamless image. Take some time to zoom in and scroll around a little to see how it looks.



- 7. Share your panorama.** Save your finished panorama to share and enjoy. You can put it on your Web site, print it, email it, or even open it directly in Roxio PhotoSuite, to edit it further.



- 8. Tips for better panoramas.** Now that you've seen how easy it is to make a panorama, here are a couple tips. First, use a tripod to keep your camera level as you turn it and take your photos, this will avoid having to cut off the top or bottom of your panorama due to uneven framing. Second, overlap each photo about 25 percent with the previous one; this will help them blend smoothly.

