

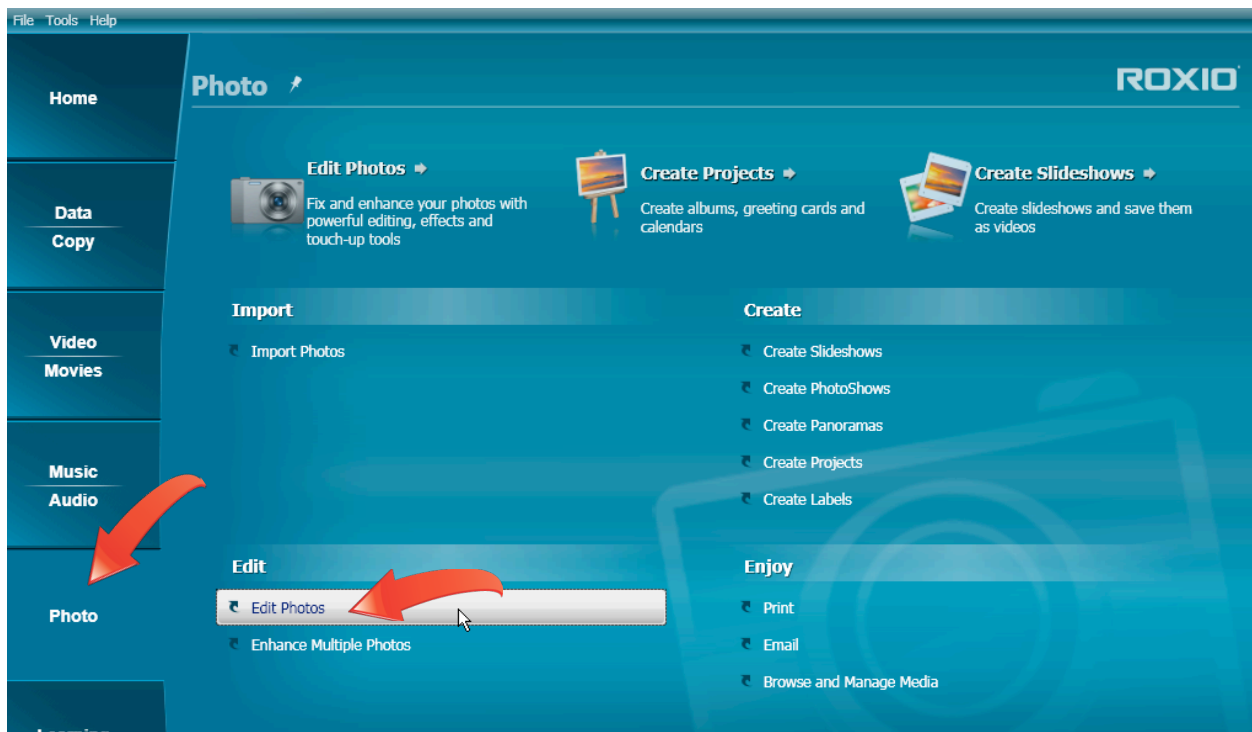


Restoring Old Photos in PhotoSuite

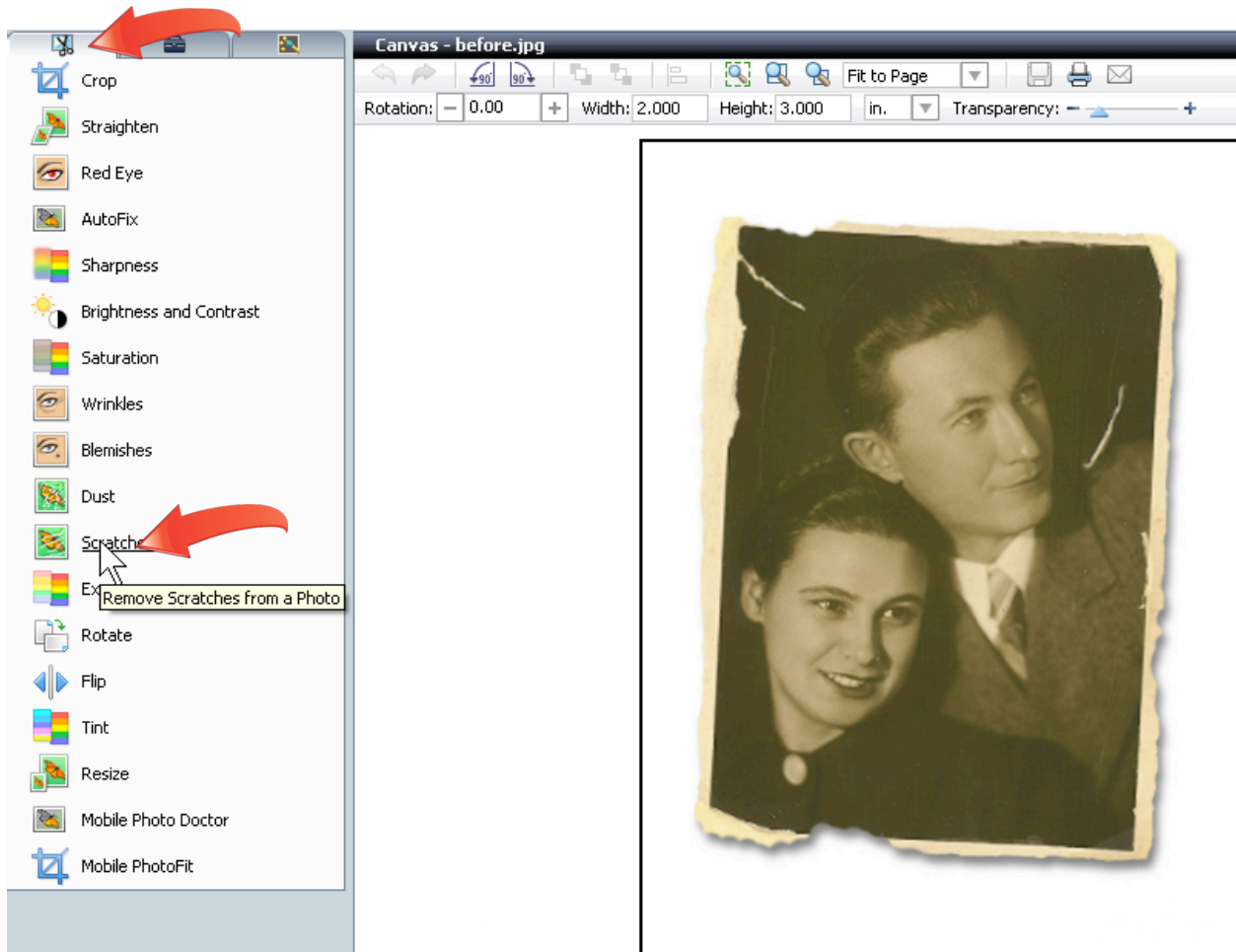
Roxio PhotoSuite provides a comprehensive suite of easy to use tools for quickly fixing and enhancing your photos. In this tutorial, you'll learn to remove scratches from a photo, adjust exposure, crop ragged edges, straighten a photo and adjust color.

Getting Started:

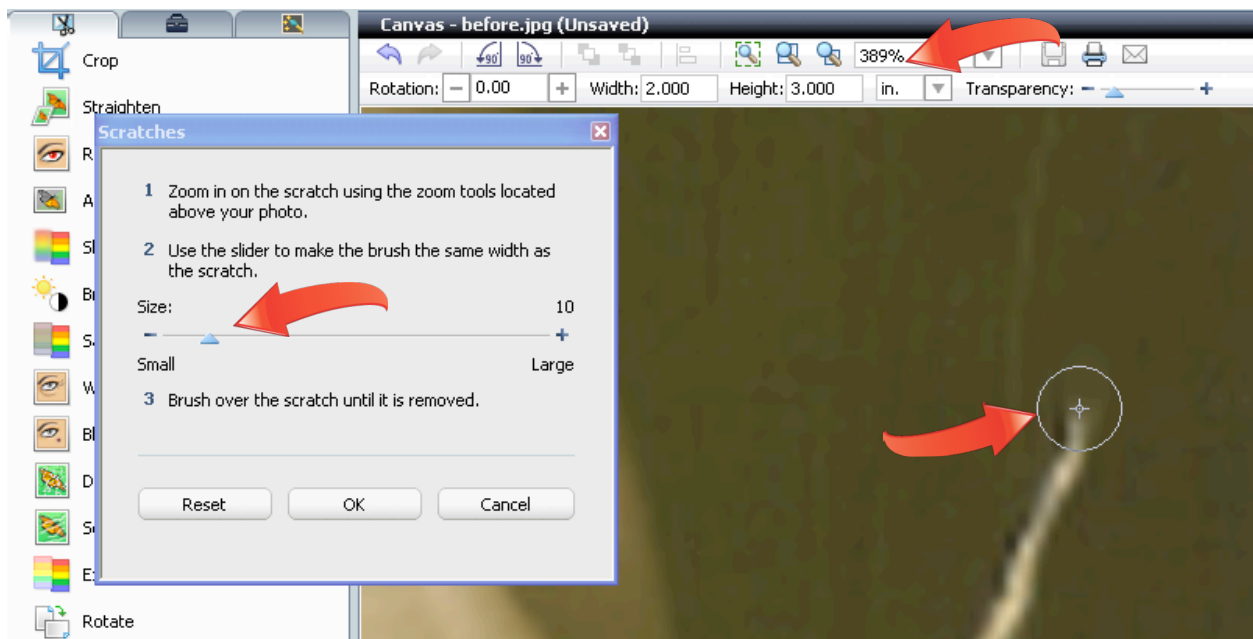
1. To start, run Roxio Creator, and then click "Photo" in the Project Pane. The Photo task list opens. Select "Edit Photos" on the left.



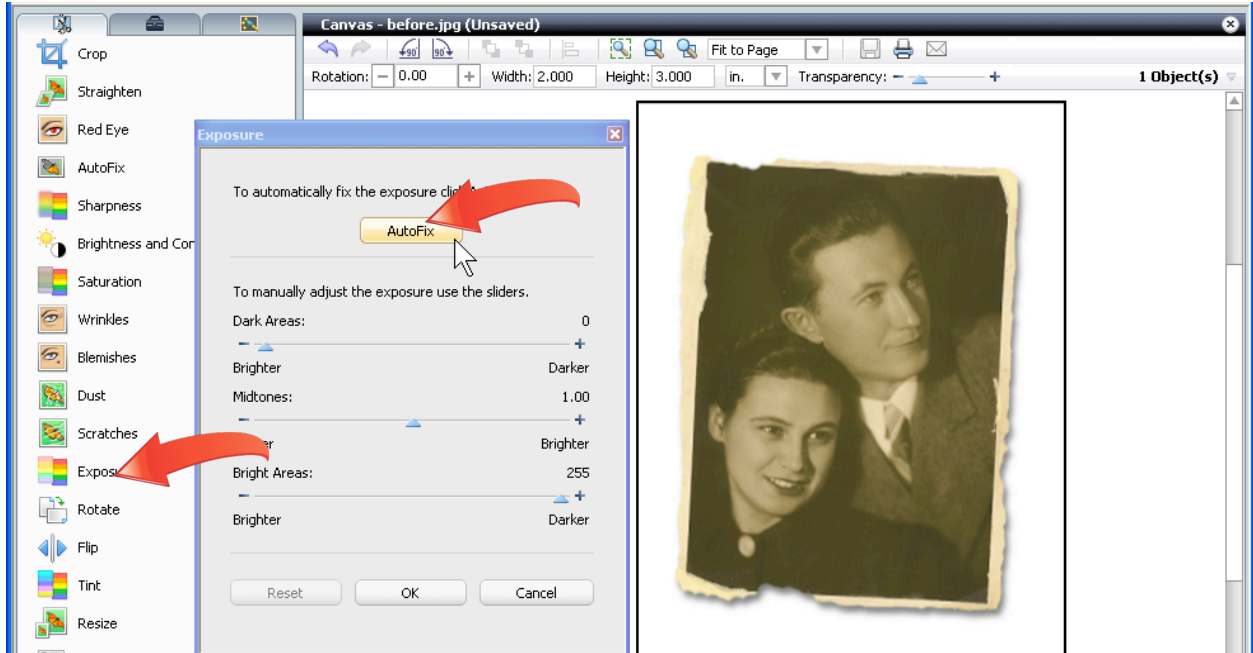
2. **Open the photo in Roxio PhotoSuite.** To open the photo, click "File > Open," and navigate to where you stored the photo. Click the photo, and then Open to load it into PhotoSuite.
3. **Choose the Scratches tool.** In the tool panel on the left, Click "Fix" to open those tools, then click "Scratches."



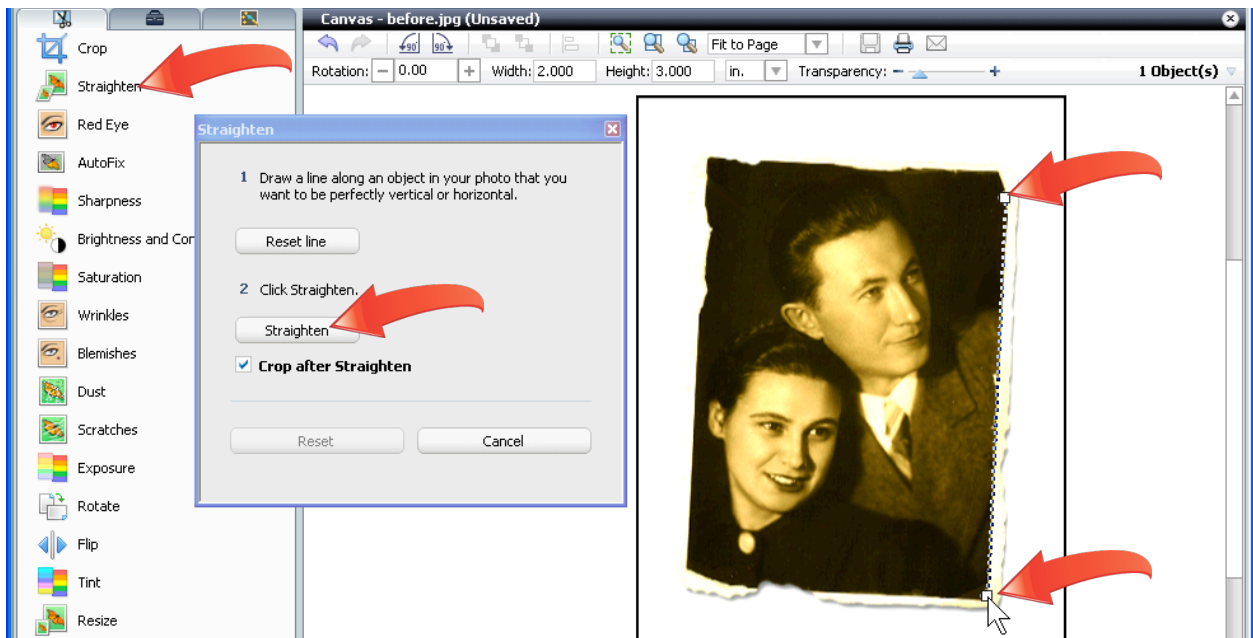
4. Repair the scratches. Use the zoom controls on the top to zoom into the image, then resize the Scratches brush to the width of the scratch, and brush over the scratch until it's gone. Repeat as necessary, and then click "OK" to close the dialog.



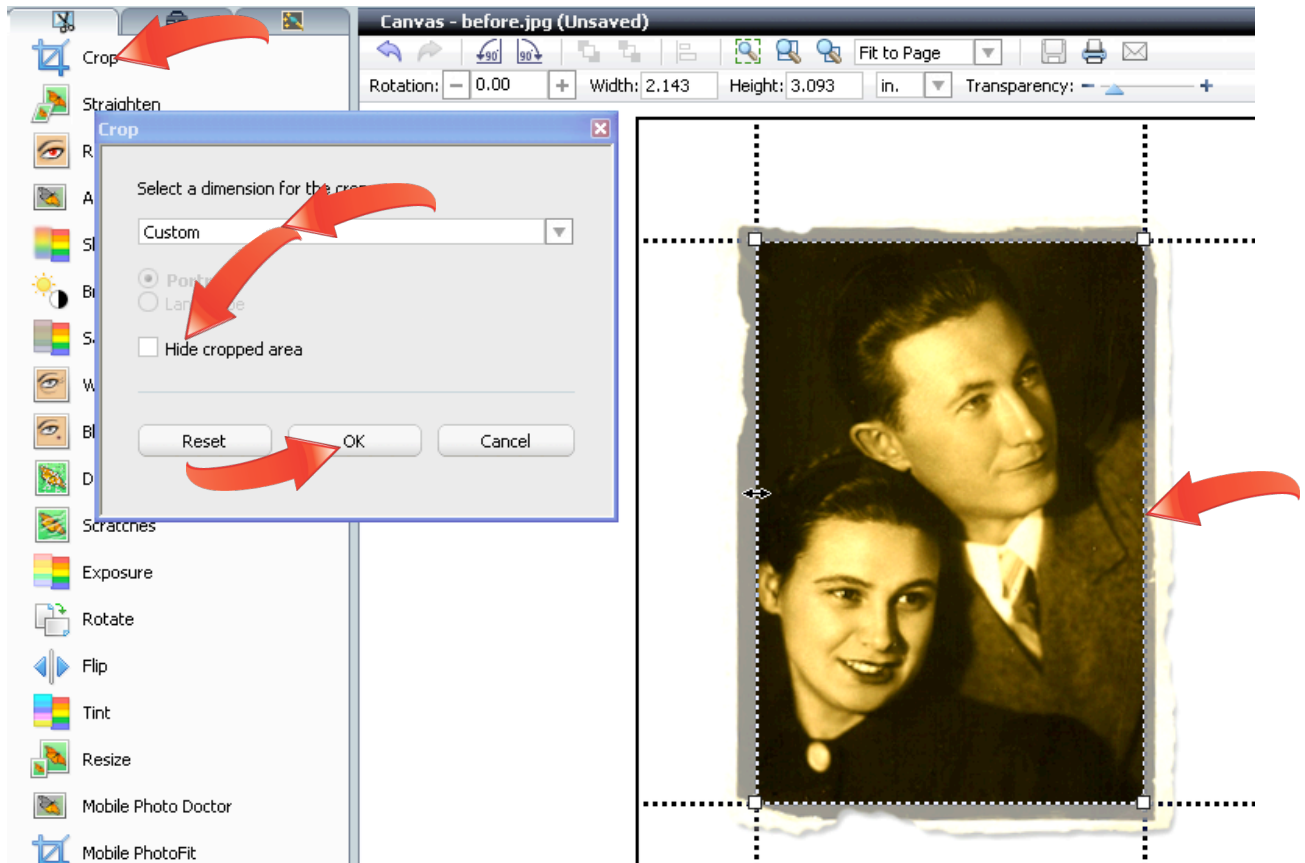
5. **Correct Exposure.** In the tool panel on the left, click “Exposure” to open the Exposure window, and then click “AutoFix.” PhotoSuite analyzes the image, and adjusts the exposure. If necessary, fine-tune the photo’s exposure using the sliders beneath the AutoFix button. Once you’re satisfied, click OK to close the window.



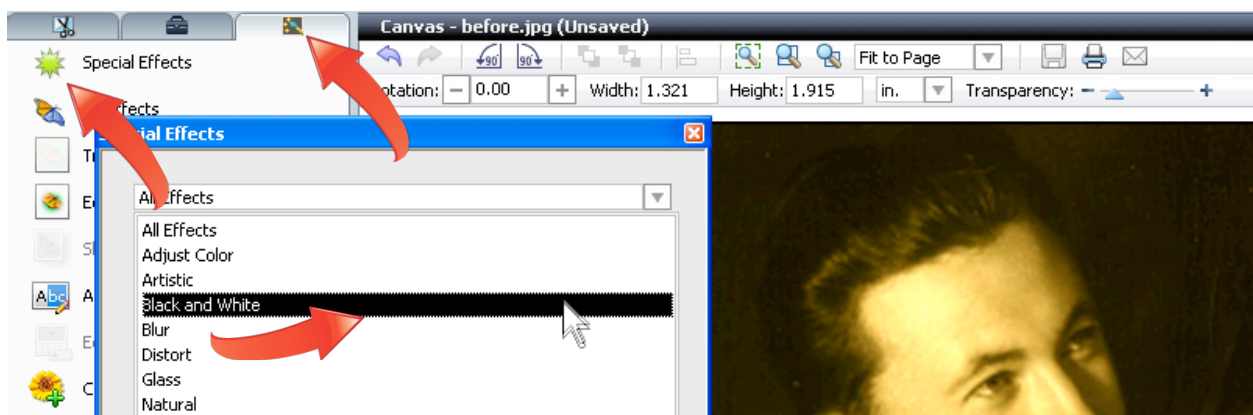
6. **Straighten the photo.** In the tool panel on the left, click “Straighten,” and then find an object that’s supposed to be horizontal or vertical, like the right edge of the photo. Click on the top, and then on the bottom along the edge, and then click “Straighten.” PhotoSuite straightens and crops the image.



7. **Crop the photo.** In the tool panel on the left, click the “Crop” icon. In the Crop window, the list box lets you choose preset sizes for the photo, like 3x5 or 5x7, or Custom for jobs like this one. Choose the desired dimension, and then drag the crop lines inwards until the ragged edges are outside the crop lines. If desired, Click “Hide cropped area” for a better preview. Then, click “OK” to crop the photo.



8. **Open the Black and White special effect.** Click the “Enhance your photos tab” to open PhotoSuite’s photo enhancement filters. Click “Special Effects,” and choose “Black and White” to reveal those effects.



9. Restore the photo to pure black and white. Double-click the desired effect to apply it to the photo and then click "OK" to close the dialog. Save the file as normal.

