

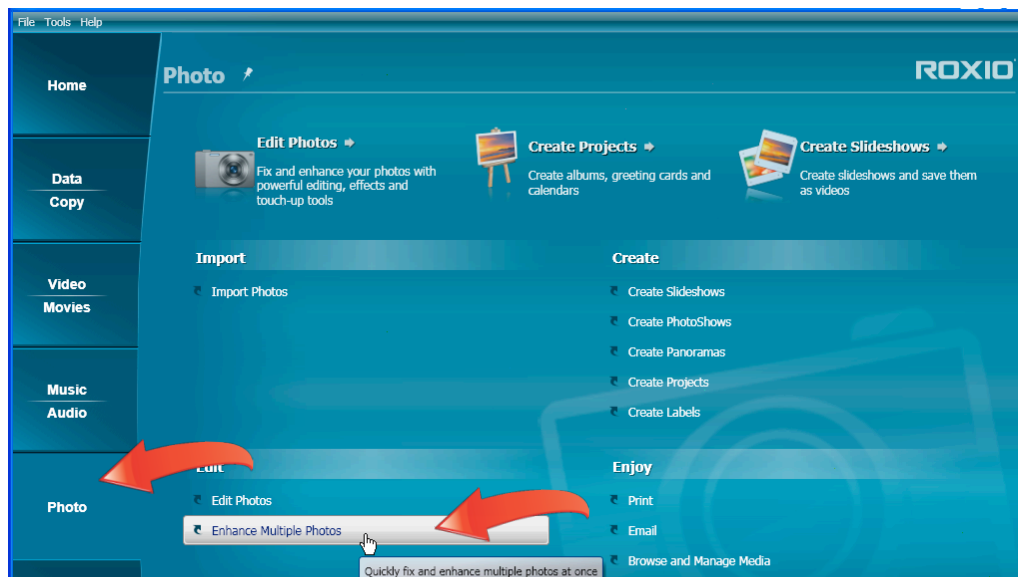


Edit Multiple Photos Simultaneously

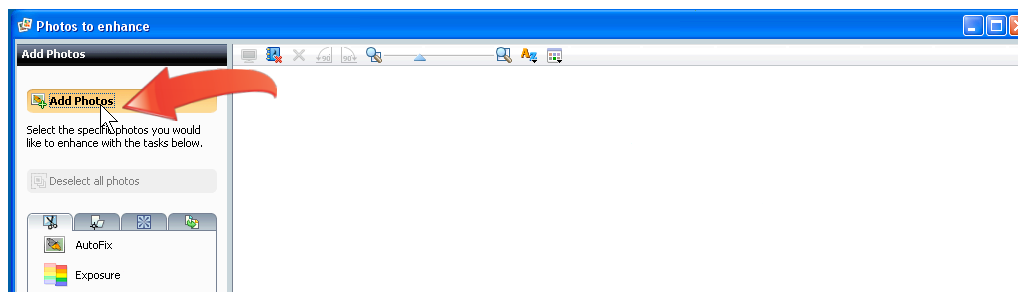
Roxio's **Photo Enhancement Assistant** makes it easy to edit multiple photos to correct exposure and red-eye, apply special effects, resize the photos and convert them to a different size and format.

Getting Started:

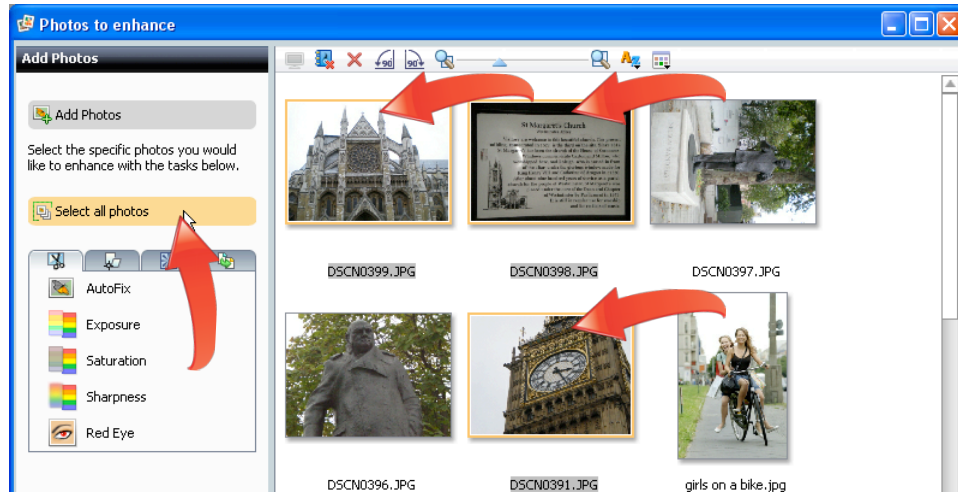
1. To start, run **Roxio Creator**, and then click **"Photo"** in the **Project Pane**. The **Photo** task list opens. Select **"Enhance Multiple Photos"** on the left. **Roxio Photo Enhancement Assistant** opens.



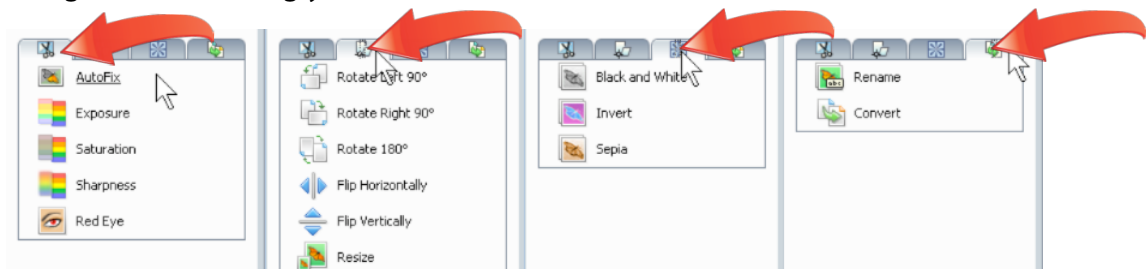
2. **Load your photos.** Click **"Add Photos"** to load your photos. The **Add Photos** dialog opens. Navigate to where you stored your photos, select them, and click **"Add Photos"** to load them into the **Photo Enhancement Assistant**.



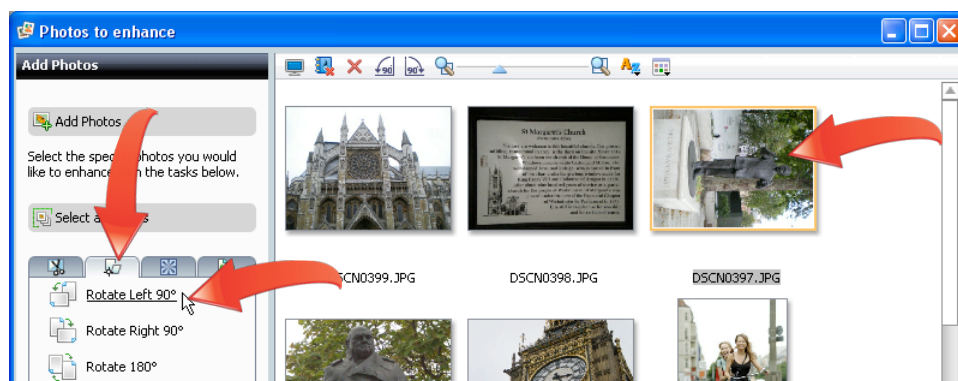
3. **Choose your target photos.** Select one or more photos by pressing the Ctrl key and clicking the target photos, or click "Select all photos" to select all photos.



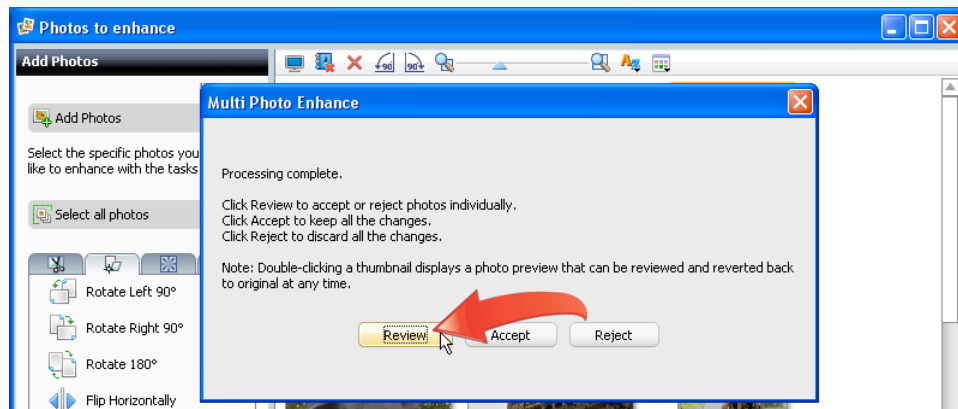
4. **Choose your adjustments.** All adjustments are contained in one of four tabs on the left. The first tab contains the AutoFix adjustment, which automatically adjusts the exposure, saturation and sharpness of photos, and individual exposure, saturation and sharpness controls, plus red eye reduction. The second tab contains rotation, flip and resize controls, while the third contains three special effects. The final tab is for renaming and converting your files to different formats.



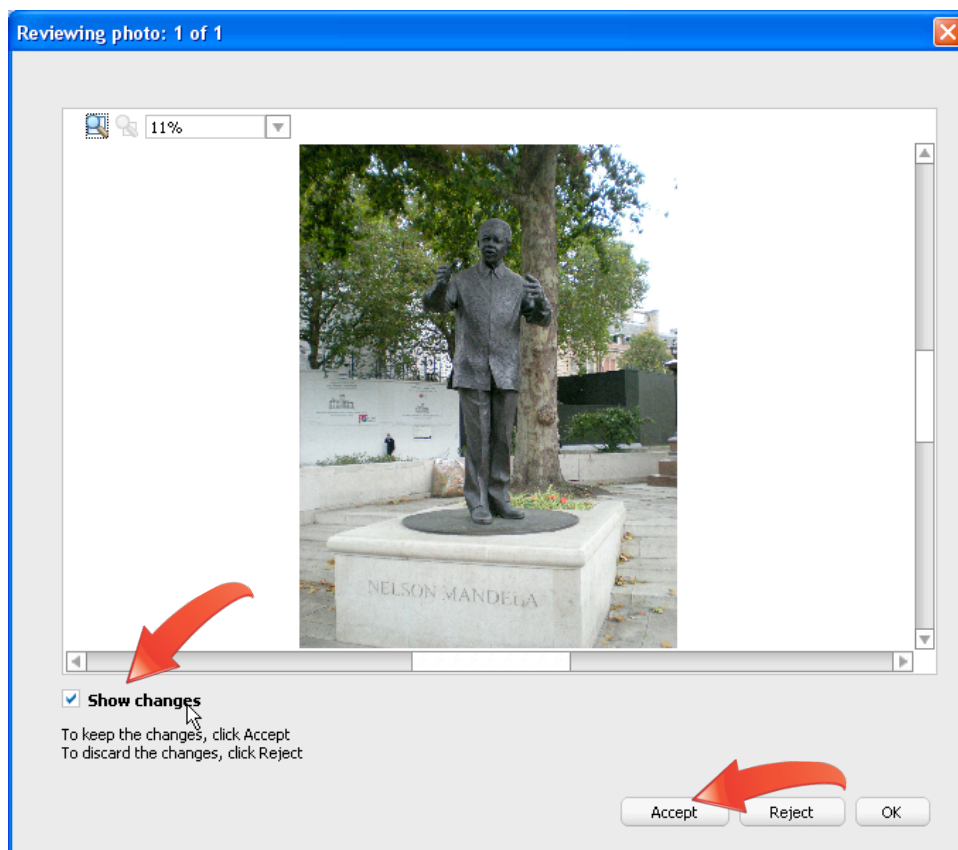
5. **Apply an adjustment to a single photo.** To rotate a photo shot in landscape mode, click the photo, then the "Transformations" tab, and then "Rotate Left 90°".



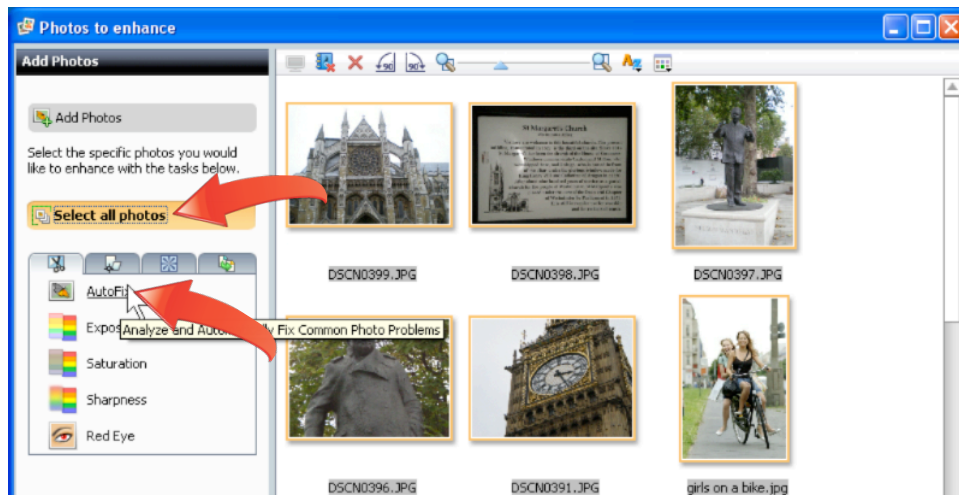
6. **Review the adjustment.** Photo Enhancement Assistant applies the adjustment (in this case rotating the photo) and lets you choose whether to Review, Accept or Reject the adjustment. Click "Review" to review the adjustment.



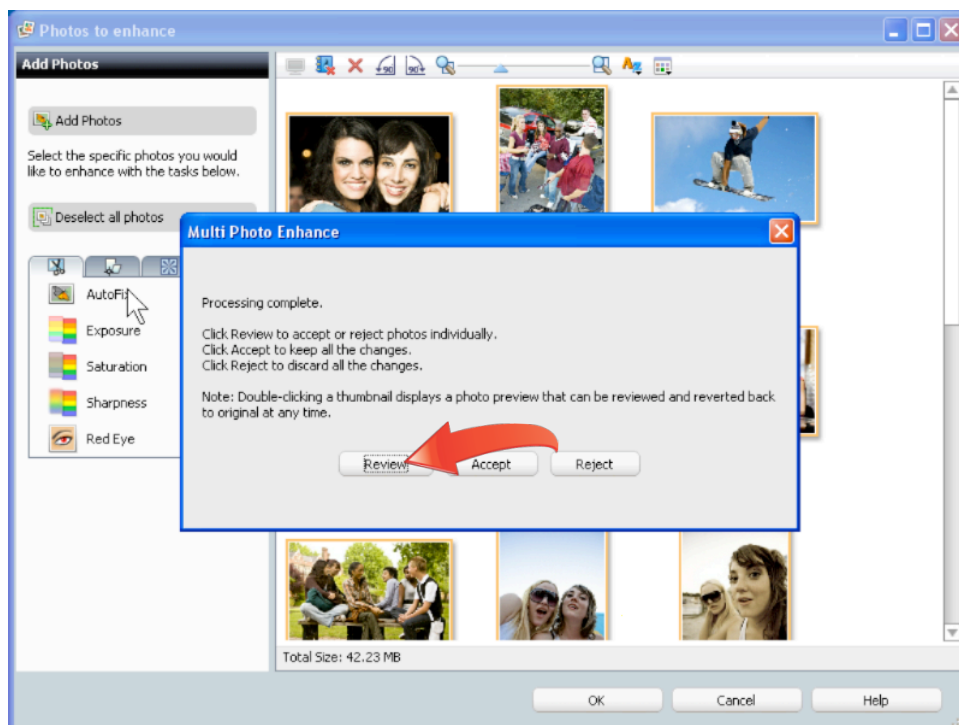
7. **Accept or reject the adjustment.** Photo Enhancement Assistant opens the Reviewing Photo dialog. On the bottom left, toggle the "Show changes" checkbox on and off to see the before and after views. Then accept or reject the change by choosing the respective button, or click "OK" to accept the change, and open a dialog that allows you to accept or reject adjustments made to subsequent photos in the batch. More on this option in steps 10 and 11. In this case, accept the adjustment.



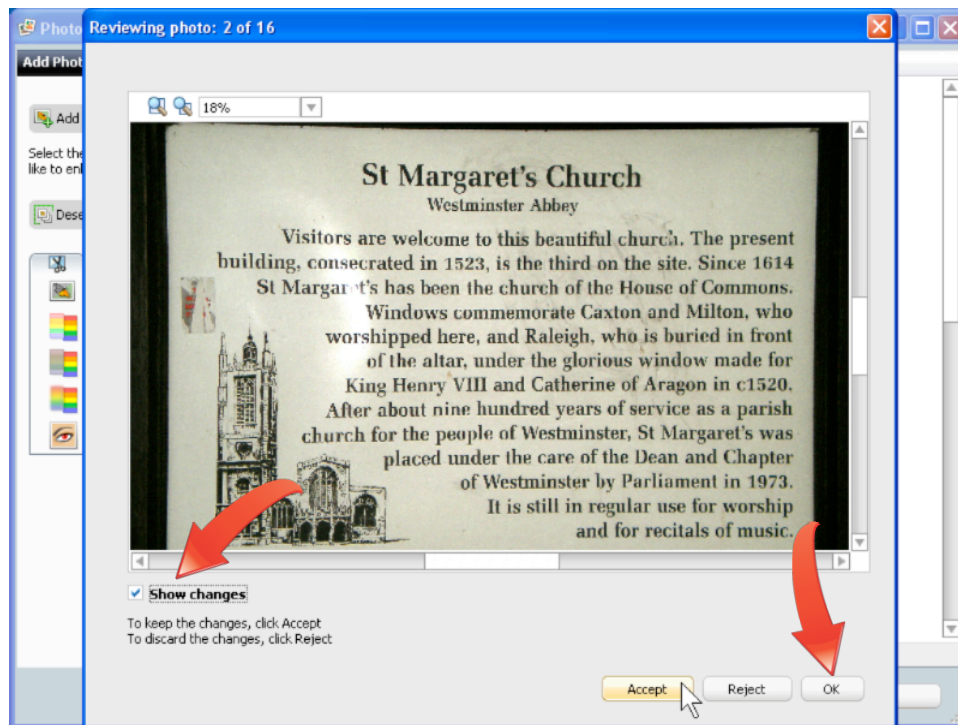
8. **Apply an adjustment to all photos.** Now apply AutoFix to all the photos. Click “Select all photos,” then click “AutoFix,” and Photo Enhancement Assistant processes all photos.



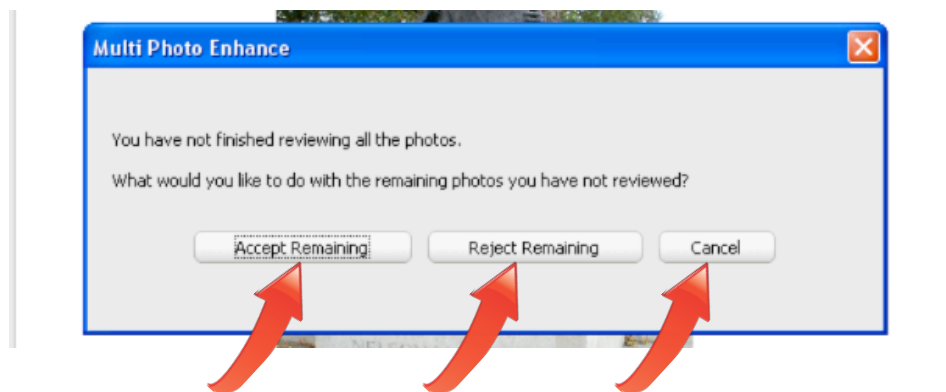
9. **Review the adjustment.** Again, Photo Enhancement Assistant applies the adjustment and lets you choose whether to Review, Accept or Reject the adjustment. Click “Review” to review the changes.



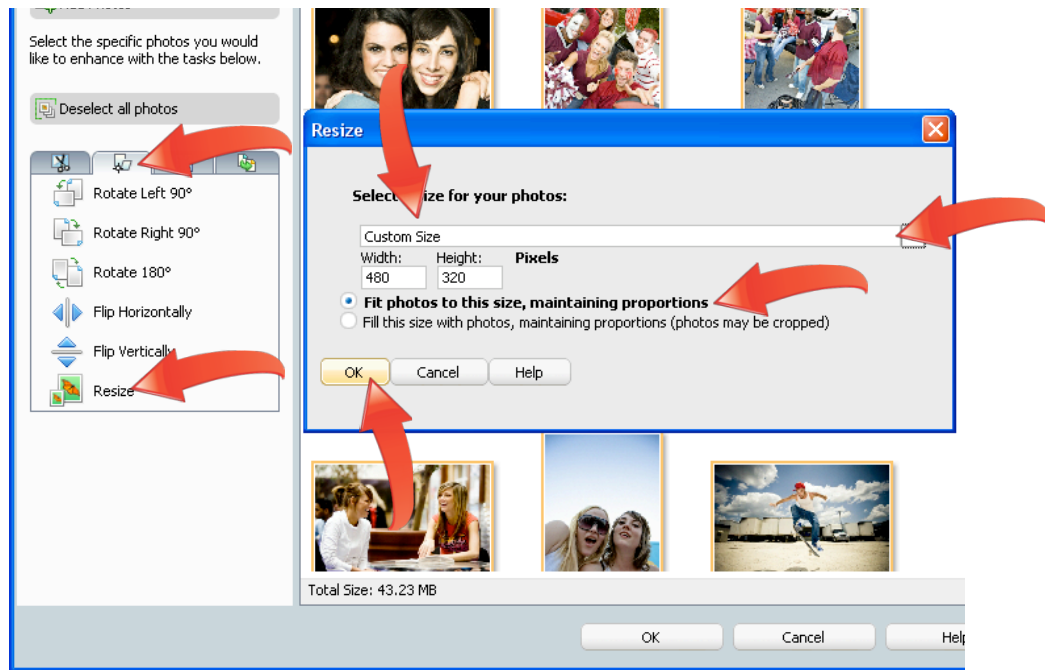
10. **Accept or reject the adjustments.** As before, Photo Enhancement Assistant opens the Reviewing Photo dialog. On the bottom left, toggle the “Show changes” checkbox on and off to see the before and after views. Then accept or reject the change by choosing the respective button, or click “OK” to accept the change, and open a dialog that allows you to accept or reject adjustments made to subsequent photos in the batch. In this case, click “OK” to accept the adjustment and open the Multi Photo Enhance dialog.



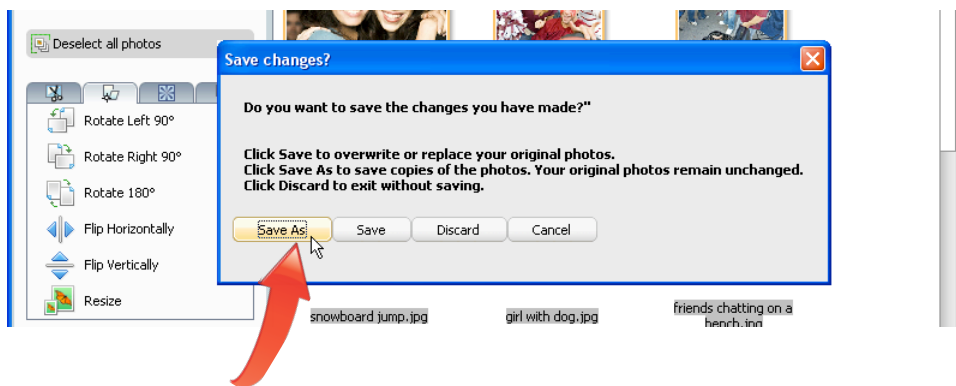
11. **Accept or Reject adjustments to the remaining photos.** In the Multi Photo Enhance dialog, choose “Accept Remaining” to apply the adjustment to all subsequent photos in the batch, “Reject Remaining” to reject the adjustment for all subsequent photos, or “Cancel” to return to the Reviewing Photo dialog.



12. **Resize your photos for your target display device**, in this case a cell phone with a 480x320 screen. With all photos still selected, click the “Transformations” tab, and then “Resize.” There’s no 480x320 preset, so choose “Custom Size” in the list box, type 480x320 into the Width and Height text boxes, and choose either “Fit photos to this size, maintaining proportions,” or “Fill the size with photos, maintaining proportions (photos may be cropped).” In this case, choose the first, click “OK,” and accept the results without review.



13. **Save your photos.** Click “OK” on the bottom of the Photo Enhancement Assistant (see the screen shot directly above), which opens the Save Changes dialog. Click “Save” to overwrite your original photos, “Save As” to save copies of the photos, or “Discard” to exit the dialog and return to the Photo Enhancement Assistant without saving the files. In this case, choose “Save As,” which opens the Save Location dialog.



14. Choose the storage location for your new photos. Click to select an existing folder to save your photos into (or create a new folder, and choose the new folder). Then click "Save" to store the photos in the designated folder.

